

TECHNICAL FEATURES

ENGINE IDENTIFICATION

IDENTIFICATION OF VM DIESEL ENGINES

SUN-SERIES

S	Serie
U	Universale
N	Nuova
4	Number of cylinders
1	Bore
0	Bore
5	Bore
T	Turbocharged
I	Intercooled
E	Emissioned
2	EC 2002/88 Stage 2

HR-SERIES

H	High
R	Revolution
6	Number of cylinders
9	Number of cylinders
4	Bore
9	Bore
2	Bore
H	Water cooled
T	Turbocharged
I	Intercooled
P	Single injection pumps
2	EURO2 homologation
3	EURO3 homologation

D-SERIES

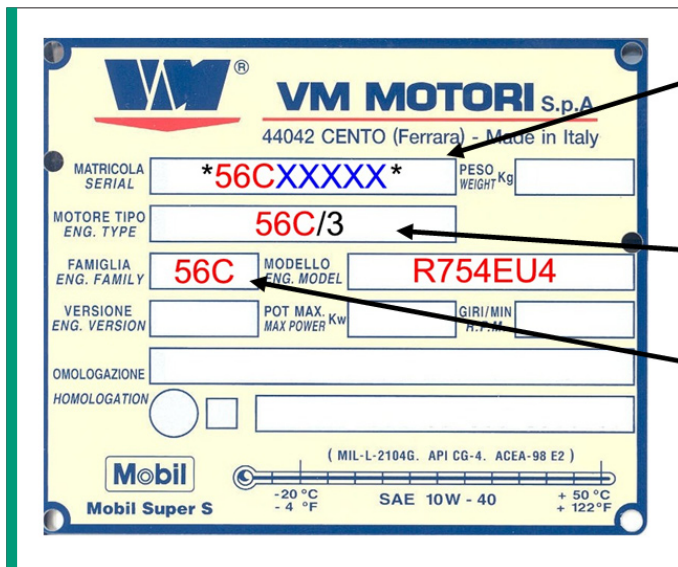
D	Direct Injection
7	Multiplied with factor 10=
0	Capacity 1 cylinder cm ³
7	Multiplied with factor 10=
5	Capacity 1 cylinder cm ³
3 / 4 / 6	No. of cylinders
E	Emissioned
S	„Soft“-turbocharged
T	turbocharged
I	Intercooled
L	Liquid cooled
1	EPA - 97/68/EG Stage I
2	EPA - 97/68/EG Stage II
3	EPA - 97/68/EG Stage IIIA

R-SERIES

R	Common Rail Injection
7	Multiplied with factor 10=
5	Capacity 1 cylinder cm ³
3 / 4 / 6	No. of cylinders
E	Emissioned
S	„Soft“-turbocharged
T	turbocharged
I	Intercooled
3	EPA - 97/68/EG Stage IIIA
4	EPA - 97/68/EG Stage IIIB
EU4	EURO4 homologation
EU5	EURO5 homologation
EU6	EURO6 homologation

TECHNICAL FEATURES

SYSTEM OF ENGINE IDENTIFICATION NUMBER



SERIAL NUMBER

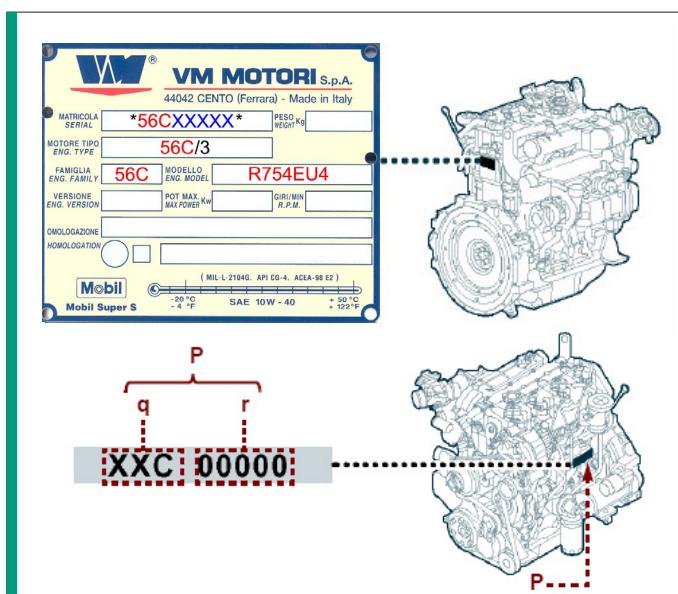
56CXXXXX 5-digit serial number

SPECIAL SETTINGS

56C/3 e.g. „/3“ = 2'600 min-1

ENGINE FAMILY

56C engine family



Advice: Just the engine family and the 5-digit serial number are stamped in the engine block (identical to the first line of the engine plate).